

RESEARCH

Open Access



# Predicting students' flow experience through behavior data in gamified educational systems

Wilk Oliveira<sup>1,2\*</sup> , Kamilla Tenório<sup>1</sup> , Juho Hamari<sup>2</sup> , Olena Pastushenko<sup>3</sup>  and Seiji Isotani<sup>1</sup> 

\*Correspondence:  
wilk.oliveira@usp.br

<sup>1</sup> Institute of Mathematics and Computer Science, University of São Paulo, São Carlos, SP, Brazil

Full list of author information is available at the end of the article

This article is an extension of the conference paper conducted by Oliveira et al. (2021). Previous studies of this project have been published: Oliveira et al. (2018) conducted a systematic literature review about Flow Theory and Educational Technologies; Oliveira (2019) presented the project overview; Oliveira et al. (2019) proposed a theoretical model relating students' data logs and their flow experience in educational systems; Oliveira et al. (2020) conducted a qualitative study analyzing students' data logs and their flow experience in an educational system; and Oliveira et al. (2021) conducted a data-driven study modeling students' flow experience based on their data logs in a gamified educational system.

## Abstract

The flow experience (*i.e.*, challenge-skill balance, action-awareness merging, clear goals, unambiguous feedback, concentration, sense of control, loss of self-consciousness, transformation of time, and *autotelic* experience) is an experience highly related to the learning experience. One of the current challenges is to identify whether students are managing to achieve this experience in educational systems. The methods currently used to identify students' flow experience are based on self-reports or equipment (*e.g.*, eye trackers or electroencephalograms). The main problem with these methods is the high cost of the equipment and the impossibility of applying them massively. To address this challenge, we used behavior data logs produced by students during the use of a gamified educational system to predict the students' flow experience. Through a data-driven study ( $N = 23$ ) using structural equation modeling, we identified possibilities to predict the students' flow experience through the speed of students' actions. With this initial study, we advance the literature, especially contributing to the field of student experience analysis, by bringing insights showing how to step towards automatic students' flow experience identification in gamified educational systems.

**Keywords:** Students' flow experience, Educational systems, Gamified education, Behavior data, Data-driven study

## Introduction

Flow experience, according to the Flow Theory (Csikszentmihalyi & Csikszentmihalyi, 1975), refers to an optimal experience felt by people while performing an activity as a result of total involvement in the task (Csikszentmihalyi & Csikszentmihalyi, 1975, 1988; Csikszentmihalyi, 1997a). Previous studies have pointed out that flow experience (*i.e.*, challenge-skill balance, action-awareness merging, clear goals, unambiguous feedback, concentration, sense of control, loss of self-consciousness, transformation of time, and *autotelic* experience) has a beneficial influence on students' learning outcomes in online environments (*i.e.*, who achieves a high flow experience has a higher probability of achieving a good learning experience Esteban-Millat et al., 2014; Panigrahi et al., 2018; Özhan & Kocadere, 2020).

Considering the relevance of students' flow experience in online learning environments, there is growing interest in investigating the effects of different approaches, such as virtual reality (Wang et al., 2021), game-based learning (Chan et al., 2021), and gamification (Oliveira et al., 2020), on students' flow experience in the educational context. Specially, in the gamification field, previous studies have pointed out that gamified scenarios can lead learners to experience flow (Kocadere & Çağlar, 2015; Sillaots, 2014; Zhao & Li, 2020) and flow experience in gamified learning environment had a highly significant impact on motivation, and increased students' academic success (Özhan & Kocadere, 2020).

However, measuring flow experience in online learning systems (*e.g.*, gamified educational systems) is still a challenge (Jackson & Marsh, 1996; Hamari & Koivisto, 2014; Lee et al., 2014; Oliveira et al., 2019; Semerci & Goularas, 2020). The flow experience measurement is challenging because among the instruments more adopted to measure flow experience in educational settings are questionnaires, observations, interviews, focus groups, eye trackers and electroencephalogram (EEG) (Perttula et al., 2017; Oliveira et al., 2018, 2021). Nonetheless, these methods present limitations related to high cost, remove students from the activity and the impossibility of conducting a massive application (Oliveira et al., 2018, 2019; Oliveira, 2019).

At the same time, while the methods currently used have several limitations (Perttula et al., 2017; Oliveira et al., 2018, 2021), the increasing use of online education systems generate more and more behavior data logs (*i.e.*, interaction data that represents the behavior of students when using an educational system) (Eberle & Hobrecht, 2021; Chaku et al., 2021). Thus, these data logs (*e.g.*, number of mouse clicks, time taken to complete a given activity, an average of correct activities, among others) generate the possibility of predicting different user experiences through possible demonstrated behavioral patterns through the data (Lee et al., 2014; Oliveira, 2019).

To meet the challenge of students' flow experience identification in educational systems, we conducted a study ( $N = 23$ ) aiming to predict the students' flow experience based on the behavior of these students during the system usage and answer the following research question: what students' behaviors can be used to predict their flow experience in a gamified educational system? The main results show a promising use of students' behavior (represented by data logs), mainly related to the use of speed of students' action to predict their flow experience. Consequently, this study advances state-of-the-art and contributes to future studies related to prediction and automatic measurement of students' flow experiences in gamified learning systems.

This article is structured as follows: 'Background' section provides a background of flow theory in education and gamification in education fields. Besides it, 'Background' section also presented related works that investigated data logs to measure flow experience. 'Study design' section depicts the study design, and 'Result' section describes the results obtained after the study's conduction and discusses the main results found. Finally, in 'Concluding remarks' section, the concluding remarks of this work are depicted.

## Background

In this section, we present the main topics addressed in this article (*i.e.*, Flow Theory in education and gamified education). We also present the main related works.

### Flow theory in education

Csikszentmihalyi and Csikszentmihalyi (1975) first introduced the concept of flow to define an “optimal experience”, which is an experience where individuals get into an optimal state during a certain activity while the mind becomes effortlessly focused and engaged (Csikszentmihalyi & Csikszentmihalyi, 1975). According to Trevino and Webster (Trevino & Webster, 1992), flow experience is a significant element in understanding human-technology interactions. Based on it, Flow Theory has been extensively explored in different computer-based contexts, including educational technology contexts (Zhao et al., 2021).

The flow experience is represented as the interconnection of the following nine dimensions (Csikszentmihalyi & Csikszentmihalyi, 1988; Csikszentmihalyi, 1997b; Jackson et al., 2011): (1) challenge-skill balance (CSB); (2) action-awareness merging (MMA); (3) clear goals (G); (4) unambiguous feedback (F); (5) total concentration on the task at hand (C); (6) sense of control (CTRL); (7) loss of self-consciousness (LSC); (8) transformation of time (T); and (9) *autotelic* experience (A). Consequently, according to Csikszentmihalyi, to achieve the flow experience, it is required that a person reach these nine dimensions simultaneously (Csikszentmihalyi & Csikszentmihalyi, 1988).

In the educational context, during the learning process, flow occurs as a feeling of pleasure that translates into achieving realistic goals and overcoming prescribed challenges (Csikszentmihalyi, 1990). The literature points out that the flow state is particularly recurrent in the context of learning, and educational settings benefit from the state of flow (Cesari et al., 2021). For example, Hamari et al. (2016) showed that flow and engagement had a positive association with student learning in the game-based learning context. At the same time, results achieved by Klein et al. (2010) also show that flow affected student perceived learning and student satisfaction.

Over the years, different instruments were developed and adopted to measure flow experience (Perttula et al., 2017; Oliveira et al., 2018). According to a secondary study conducted by Oliveira et al. Oliveira et al. (2018), in the educational learning context, the questionnaire is the most used instrument to measure student flow experience during the learning process in computer-based learning activities. Moreover, although in a small proportion, user data logs, interviews, and recording of user’s faces are also instruments that have been investigated by researchers in the educational technology context (Oliveira et al., 2018). Among these mainly adopted methods, student data logs (representing the students’ behavior in the system) have shown promising results to detect student flow experience in online learning environments (Lee et al., 2014; Oliveira et al., 2019, 2020; Semerci & Goularas, 2020; Oliveira et al., 2021).

### Gamified education

Gamification represents the idea of “transforming systems, service, and activities to better afford similar motivational benefits as games often do” (Hamari, 2019). According

to Koivisto and Hamari (2019), information systems that apply the gamification technique aim to afford similar experiences and motivations as games do, and consequently, attempt to affect user behavior. This technique has been successfully adopted in the last decade and has been applied in different fields, such as marketing, commerce, health, and education (Koivisto & Hamari, 2019; Klock et al., 2020; Zainuddin et al., 2020; Kalo-giannakis et al., 2021).

In the online learning field, there is growing evidence suggesting that gamification is an effective learning tool (Zainuddin et al., 2020; Sailer & Homner, 2020). Researchers and practitioners are successfully applying gamification in online learning environments to overcome the challenges these systems face, such as lack of student motivation, engagement, and low student performance (Tenório et al., 2016; Lopez & Tucker, 2019; Groening & Binnewies, 2019). For example, Tenório et al. (2016) show that gamification positively affected students' outcomes, increasing the number of their accesses and registering a higher percentage of activities performed and corrected in a gamified online system.

These positive effects of gamification on students' outcomes in online learning environments could be related to the positive impact of gamification on student flow experience since the flow experience leads to better students' learning outcomes in educational settings (Özhan & Kocadere, 2020; Erhel & Jamet, 2019; Yen & Lin, 2020). Nonetheless, it is still a challenge to measure effectively student flow experience during the learning process in gamified learning systems (Jackson & Marsh, 1996; Hamari & Koivisto, 2014; Lee et al., 2014; Oliveira et al., 2019; Semerci & Goularas, 2020). Instruments previously adopted (*e.g.* EEG, eye trackers, interviews, and questionnaires) presented limitations to measure flow experiences as high cost and the impossibility of conducting a massive application (Lee et al., 2014; Oliveira et al., 2018; Oliveira, 2019). To overcome these challenges, more recent studies are investigating the effectiveness of measuring flow experiences through the use of student data logs in gamified learning systems, which is showing promising results (Oliveira et al., 2019, 2020).

### Related works

Different methods were developed and adopted over the years to measure flow experience (Perttula et al., 2017; Oliveira et al., 2018). In the educational context, two methods have been increasingly investigated, EEG and data logs (Wang & Hsu, 2014; Lee et al., 2014; Oliveira et al., 2019, 2020). In the study of Wang and Hsu (2014) is explored if the brainwave signal data collected using an EEG headset could help examine flow experience using a psychophysiological approach in the educational context. Another work that investigates the use of EEG to measure flow experience in the educational context was Wu et al. (2021). In this work, the results show that the EEG could be used in detecting students' flow experience in e-learning (Wu et al., 2021). However, the combination of flow and EEG could be a complex process that can hinder the adoption by teachers and professional practitioners (Wu et al., 2021).

The use of student data logs (what represents the behavior of students when using a certain system) to measure student flow experience is another method that is being increasingly adopted in the educational technology context, and it has been presenting promising results (Lee et al., 2014; Oliveira et al., 2019, 2020; Semerci & Goularas,

2020). One of the first studies to investigate the relationship between students' data logs and their flow experience in learning systems was Lee et al. (2014), which presented an automated detector in a step-based tutoring system, using a step regression approach, to identify student flow experience during the learning process. Oliveira et al. (2019) also investigated students' data logs in online environments to measure flow experience. In their study, Oliveira et al. (2019) proposed a theory-driven conceptual model in order to associate student interaction data logs with the nine flow experience dimensions.

In another work, Oliveira et al. (2020) adopted a qualitative research approach, think-aloud protocol, to associate users' data logs with their flow experience in an educational system. In turn, Oliveira et al. (2021) used a structural equation modeling to model students' flow experience through data logs in a gamified learning environment. Moreover, Semerci and Goularas (2020) proposed a new method for evaluating the flow state of students in educational systems. The study used students' grades and also students' interaction using activity heatmaps, deep neural networks in an e-learning environment to calculate their flow state (Semerci & Goularas, 2020).

Despite the evolution of the studies that investigate the use of behavior data logs to measure students' flow experience during the learning process in educational systems, there is a lack of studies investigating the potential of data logs produced by students in gamified learning systems to predict their flow experience. Based on it, this study aims to conduct a study to predict the students' flow experience using behavior data logs produced by students during the learning process in gamified educational systems.

### Study design

Our main goal in this study is to investigate what behavior data logs can be used to predict students' flow experience in gamified educational systems. To achieve this goal, we conducted a data-driven study (*i.e.*, a research based on users' data analysis) (Dhar, 2013).

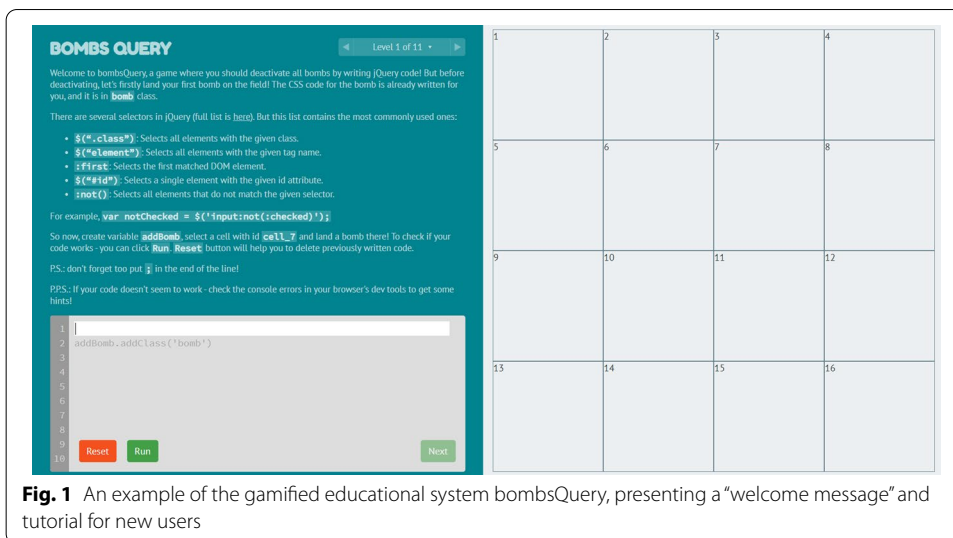
### Materials and procedure

To conduct this study, we used a gamified educational system called "bombsQuery"<sup>1</sup> (Pastushenko et al., 2018), which is a tool for teaching the basics of JavaScript/jQuery. It is a gamified system with 11 different missions, each one devoted to a different topic. Each mission has some theory and examples and a free text area where students need to insert their proposed solutions (*i.e.*, write a particular part of jQuery code). The code inserted by the students is automatically checked by the system. The system uses three different gamification elements (*i.e.*, level, progress bar, and immediate feedback).

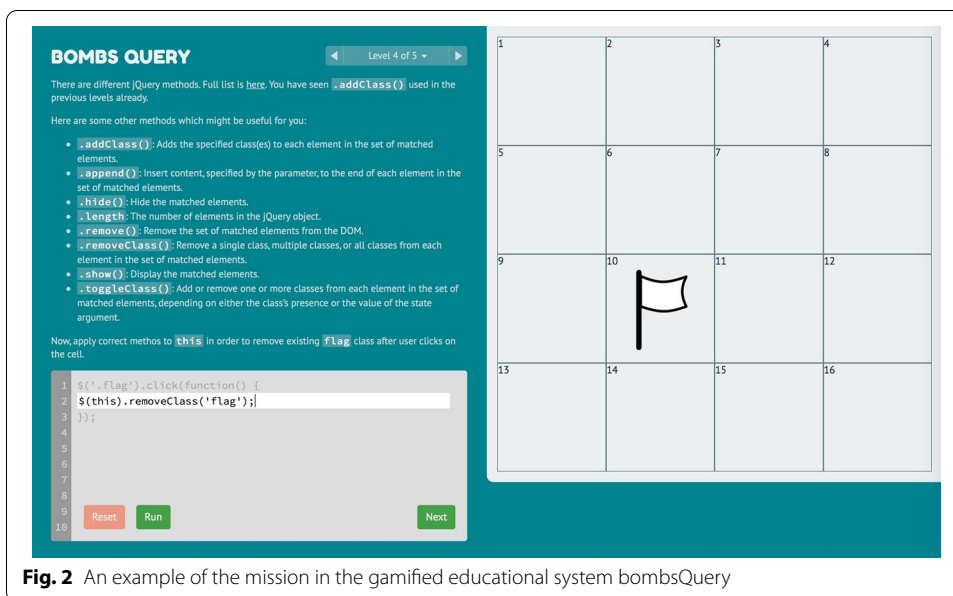
The playful goal of the missions is to clear the minefield from all bombs. If the student's solution was wrong, they have an unlimited amount of attempts to correct it. However, if their answer was correct, the next level starts. The students can always come back to any of the already solved levels. This might be useful if they want to check the accepted answer for inspiration or go through the theory once again (Pastushenko et al., 2020). The tool was chosen because it allowed the implementation of a module to collect the

---

<sup>1</sup> Available in <<https://lirael.github.io/bombsQuery/task.html>>.



**Fig. 1** An example of the gamified educational system bombsQuery, presenting a “welcome message” and tutorial for new users



**Fig. 2** An example of the mission in the gamified educational system bombsQuery

students’ data logs. Moreover, it has already been validated and used by other researchers (Pastushenko et al., 2020). Figure 1 illustrates an example of the system presenting a “welcome message” and tutorial for new users and Fig. 2 illustrates an example of the mission in the system.

To collect the students’ behavior, we implemented a module in the tool (described below). Data logs were collected based on the theoretical model proposed by Oliveira et al. (2019). The theoretical model proposed by Oliveira et al. (2019) presents a series of behavior (data logs) theoretically associated with the nine original flow experience



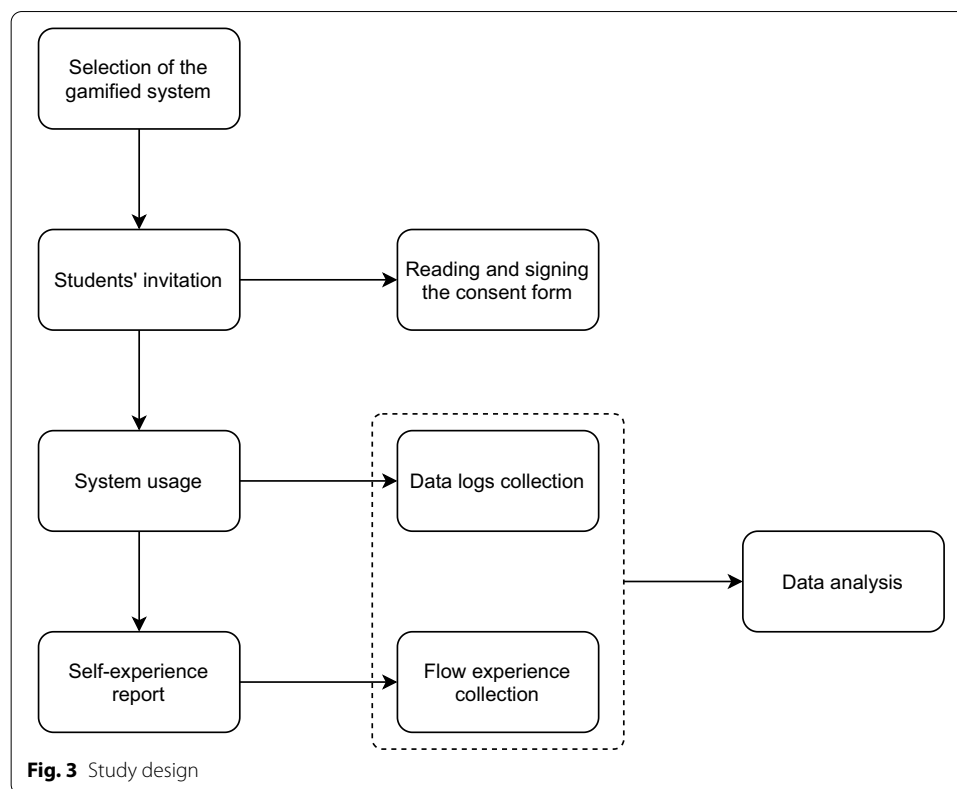
dimensions. The module proposes nine different data logs that can be related to the nine flow experience dimensions. The collected data logs in our study are:

- *Average students' response time after a feedback (ArtAF)*: This data represents the student's behavior after receiving feedback, that is, how long it took the student to process certain feedback from the system and enter a response.
- *Number of mouse clicks (NumCOB)*: This data represents the student's general behavior when using the system concerning the number of mouse clicks that the student made, from the moment they entered the system until the moment he stopped using the system.
- *Proportion of wrong steps/responses (ProWS)*: This data represents the proportion of wrong answers by the student compared to the total number of answers provided, that is, the number of wrong answers/total number of answers provided.
- *Received feedback (RF)*: Amount of feedbacks received by the student while using the system.
- *Total unique session views (TotUSV)*: This data represents the number of times a student has seen the same phase/level in the gamified system.
- *Used time to finish a step/mission (UsdTFS)*: This data represents the time it took a student to finish each activity (regardless of the final result).
- *Active time in the system (ActTS)*: This data represents the total time a student spent using the system.

The collected data logs represent two students' behaviors (*i.e.*, speed of students' action and frequency of students' action), as organized next. The frequency of students' actions is represented by the (i) number of mouse clicks; (ii) proportion of wrong steps/responses; (iii) received feedback; and (iv) total unique session views. Speed of students' action is represented by the (i) average students' response time after a feedback; (ii) used time to finish a step/mission; and (iii) active time in the system.

To analyze the students' flow experience while using the system, we used the short flow state scale (short FSS) proposed by Jackson and Eklund (2002). This scale was chosen because it was previously validated by Hamari and Koivisto (2014) to be used in gamified settings, as well as, according to Oliveira et al. (2018) being the most popular scale in studies in the area of educational technologies. As the data collection was done after performing a quick activity (with less than an hour), following the recommendation of the "The Manual for the Flow Scales" (Jackson et al., 2011), we chose to use the short scale composed of nine questions (one for each dimension of the flow experience), instead the complete scale composed by 36 questions. The scale was presented in a five-point Likert scale (Likert, 1932). To ensure the quality of the responses, inspired by recent studies (Orji et al., 2018; Hallifax et al., 2019; Santos et al., 2021), we have included an "attention-check" question (*i.e.*, if you are filling out the form carefully, answer 3\*) to eliminate responses from students who were not paying due attention when answering the questions. The scale used in this study is presented in the Appendix (see Table 6).

The study was organized in four different general steps: (i) selection of the gamified system, (ii) students' invitation, (iii) system usage, (iv), self-experience report, and v) data analysis. In the *first step* (selection of the gamified system), the gamified educational



system used in the study was selected. Once the system was chosen, in the *second step* (students' invitation), an invitation was made to the institution's students through official email lists, describing the system and the stages of the study. Students who agreed to participate were then able to read and sign the free informed consent form. Then, in the *third step* (system usage), students could use the system freely. During this step, the student's behavior data logs were collected when using the system. In the *fourth step* (self-experience report), after using the system, students immediately answered the FSS so that their flow experience when using the system was collected. In the *fifth step* (data analysis), the data collected in the previous phase were then processed and analyzed. Figure 3 present the study design.

### Participants

The participants were (initially) 31 bachelor students of [Brno University of Technology (Czech Republic)], who volunteered to participate in the experiment. Five responses were excluded because students spent less than 5 min on the assignment, which is an indication that they haven't used the system. Three responses were excluded because the students answered incorrectly the attention-check question (previously described). We, therefore, included 23 participants (mean age = 21.54 years old, SD = 1.33; 6 women, 13 men, 0 non-binary, 4 preferred not to disclose gender). To participate in the study, students received a link to the questionnaires and the assignment, and they could work on it online, at their pace and preferred time.



**Table 1** Bivariate correlation coefficients (Kendall's  $\tau$ ) and significance between each data log and flow experience dimensions

	CSB	MMA	G	F	C	CTRL	LSC	T	A
ActTS	-.407*	-.315	-.452**	-.269	.266	-.117	-.234	-.133	-.214
UsdTFS	-.290	-.169	-.468**	-.286	.277	-.034	-.273	-.119	-.200
ProWS	-.251	-.310	-.405*	-.142	.081	-.109	-.298	-.173	-.222
RF	-.242	-.315	-.458**	-.187	.086	-.153	-.304	-.159	-.243
ArtAF	-.106	-.237	-.222	-.204	.357	.089	-.397*	-.173	-.256
TotUSV	-.104	-.238	-.504**	-.219	.380*	.065	-.158	.069	-.039
NumCOB	-.075	-.320*	-.324	-.112	.293	.054	-.186	-.019	-.080

Red color indicates a negative correlation, and green color indicates positive correlation. The intensity of the color indicates the level of correlation; *ActTS* active time in the system, *UsdTFS* used the time to finish a step/mission, *ProWS* proportion of wrong steps/responses, *RF* received feedback, *ArtAF* average students' response time after a feedback, *TotUSV* total unique session views, *NumCOB* number of mouse clicks, *CSB* challenge-skill balance, *MMA* action-awareness merging, *G* clear goals, *F* unambiguous feedback, *C* total concentration on the task at hand, *CTRL* sense of control, *LSC* loss of self-consciousness, *T* transformation of time, and *A* autotelic experience

\* $p < 0.05$ ; \*\* $p < 0.01$

## Results

In our study, we analyzed what behavior (data logs) can be used to predict students' flow experience in a gamified educational system. We focused on using students' data logs to predict their flow experience during the system usage, independent of the students' learning experience when using the system. We used behavior data logs as predictive variables and flow experience (identified through the flow FSS proposed by Jackson and Eklund (2002) and validated by Hamari and Koivisto (2014) for the gamification domain) as a response variable. Initially, before or decisions regarding data analysis, we analyze the data distribution. As our sample consisted of less than 30 subjects, following Wohlin et al. (2012) recommendations, we used the Shapiro-Wilk test (Shapiro and Wilk, 1965). The results indicate that our data do not follow a normal distribution.

After analyzing the distribution of the data, we initially analyzed the direct correlation between each behavior data logs and the nine flow experience dimensions. As our data do not follow a normal distribution, also following Wohlin et al. (2012) recommendations, we used Kendall's correlation,  $\tau$  test, that is a non-parametric hypothesis test for statistical dependence based on the  $\tau$  coefficient (Kendall, 1938). Table 1 presents the results. Significant correlations were identified between different data logs and six of the nine flow experience dimensions.

To answer the RQ, we conducted two different analyses. We modeled the students' behavior as latent variables and their flow experience in the gamified educational system as the response variable. Behavior data logs were organized into two different behaviors (*i.e.*, speed of students' action and frequency of students' action), as demonstrated in the section "Materials and procedure". Then, we conducted two different analyses, one analysing the relationships between the students' behavior with the overall flow experience, and other, analysing the relationships between the students behavior with the flow experience dimensions. To analyse our data and explore the relationships, we used Partial Least Squares Path Modeling (PLS-PM) analysis (Hair et al., 2016). PLS-PM was used

**Table 2** Construct reliability and validity

	Cronbach's $\alpha$	Jöreskog's rho	CR	AVE
Frequency of students' action	0.995	1.002	0.997	0.990
Speed of students' action	0.972	0.977	0.986	0.973
Flow experience	0.646	0.632	0.630	0.240

CR composite reliability, AVE average variance extracted

**Table 3** Discriminant validity

	Frequency	Flow experience	Speed
Frequency	0.995		
Flow experience	− 0.571	0.489	
Speed	0.446	− 0.763	0.986

Frequency frequency of students' action, Speed speed of students' action

**Table 4** Relationship between students' behavior and their overall flow experience

	$\alpha$	$p$ values	CI	
			2.5%	97.5%
Frequency $\rightarrow$ flow experience	− 0.289	0.467	− 0.714	0.797
Speed $\rightarrow$ flow experience	− 0.634**	0.038	− 1.253	− 0.177
Speed $\rightarrow$ frequency	0.446***	0.006	0.336	0.924

$\beta$  regression coefficient, CI confidence interval, Frequency frequency of students' action, Speed speed of students' action

\*\* $p < 0.05$ , \*\*\* $p < 0.01$

because it is a reliable method for estimating relationship models with latent variable (Hair et al., 2016), even with small samples (as such our case) (Henseler et al., 2009). To run the analyses, we used the software SmartPLS.<sup>2</sup>

To ensure the quality of the used instrument (*i.e.*, if the study data are correctly suited to the instrument), we analyzed the Construct Reliability and Validity (CRV), based on Cronbach's  $\alpha$ , Jöreskog's rho, Composite reliability, and Average Variance Extracted. The results of both analyzes show acceptable values or are virtually close to acceptable ones. Table 2 present the results. In the way, we also calculated the discriminant validity for the data, founding acceptable values, since all the square root of the variables' AVE were larger than the correlations that the variable had with the other variables (Fornell & Larcker, 1981). In Table 3, we present the discriminant validity for our data.

Finally, we analysed the relationship between students' behavior and (overall) flow experience, as well the relationships between students' behavior and flow experience dimensions. Regarding the overall flow experience, the results demonstrate a negative relationship ( $\beta = -0.634$ | $p = 0.038$ ) between speed of students' action and their flow experience. Regarding the relationships between

<sup>2</sup> Available in <<https://www.smartpls.com/>>.

**Table 5** Relationships between data logs and flow experience dimensions

	B	p values	CI	
			2.5%	97.5%
Frequency → A	0.113	0.829	− 0.725	1.434
Frequency → C	− 0.175	0.661	− 0.851	0.591
Frequency → CSB	0.275	0.268	− 0.239	0.796
Frequency → CTRL	− 0.061	0.880	− 0.517	1.065
Frequency → F	− 0.145	0.624	− 0.537	0.622
Frequency → G	− 0.414*	0.074	− 0.893	0.025
Frequency → LSC	− 0.672*	0.094	− 0.988	0.342
Frequency → MMA	0.025	0.924	− 0.356	0.644
Frequency → T	− 0.006	0.983	− 0.455	0.858
Speed → A	0.069	0.897	− 1.481	0.603
Speed → C	0.263	0.333	− 0.350	0.763
Speed → CSB	− 0.815**	0.004	− 1.046	0.192
Speed → CTRL	0.098	0.843	− 1.166	0.612
Speed → F	− 0.415	0.115	− 0.888	0.269
Speed → G	− 0.223	0.353	− 0.923	0.271
Speed → LSC	− 0.075	0.740	− 0.538	0.331
Speed → MMA	− 0.419	0.134	− 0.750	0.474
Speed → T	0.021	0.949	− 0.905	0.479
Speed → activities	0.441**	0.010	0.243	0.754

$\beta$  regression coefficient, CI confidence interval, CSB challenge-skill balance, MMA action-awareness merging, G clear goals, F unambiguous feedback, C total concentration on the task at hand, CTRL sense of control, LSC loss of self-consciousness, T transformation of time, and A autotelic experience, Frequency frequency of students' action, Speed speed of students' action  
\* $p < 0.1$ , \*\* $p < 0.05$

students' behavior and the flow experience dimensions, the results indicated a negative relationship between frequency of students' action and clear goals ( $\beta = -0.414$ | $p = 0.074$ ) and also between frequency of students' action and their loss of self-consciousness ( $\beta = -0.672$ | $p = 0.094$ ). It was also possible to identify a negative relationship between speed of students' action and challenge-skill balance ( $\beta = -0.815$ | $p = 0.004$ ). Tables 4 and 5 present the results of our analysis, and the Fig. 4 present the study path model summarizing the general results.

## Discussion

Predicting students' experience in educational systems is a contemporary and complex challenge to be faced. One of the possible alternatives for facing this challenge is through the use of behavior data logs produced by students when using educational systems. In this article, we predicted the students' flow experience based on their behavior data logs, when using a gamified educational system. The results demonstrate that it is possible to predict the students' overall flow experience based on the speed of students' actions in the system, as well is possible to predict clear goals and loss of self-consciousness based on the frequency of students' action and challenge-skill balance based on the speed of students' action.

Analyzing the correlation between the individual data logs and the nine flow experience dimensions, it was possible to identify some significant correlations (see

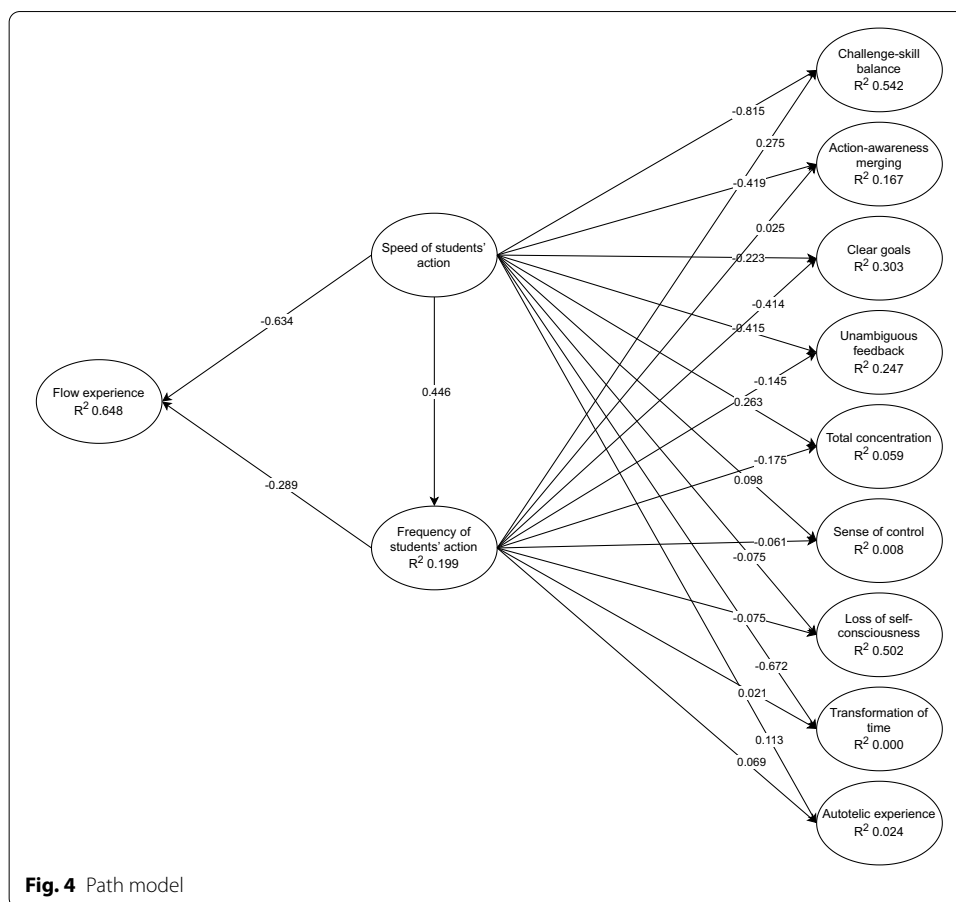


Table 1). The first correlation identified was a negative correlation between active time in the system and challenge-skill balance ( $\tau = -0.407$ ). This result demonstrates that if a student doesn't spend much time using a system, possibly they had not an experience where their abilities level was balanced with the challenge level of the task. This result is in agreement with different studies (Csikszentmihalyi, 2014; Lee et al., 2014; Oliveira et al., 2019), for a student to be motivated to use an educational system for a longer time, the difficulties of the system must be balanced according to their skill level.

At the same time, we identified a negative correlation between students' active time in the system and used time to finish a step/mission, with the clear goals dimension ( $\tau = -0.452 | \tau = -0.468$ ). All data logs observed in this correlation are related to the time the user uses the system (*i.e.*, speed of students' action) and confirming the theoretical expectations regarding flow and education (Csikszentmihalyi, 2014), indicates that possibly when students do not identify which goals should be fulfilled in the system, they tend to leave the system. At the same time, this result presents a new contribution since other recent studies *e.g.* (Lee et al., 2014; Semerci & Goularas, 2020; Oliveira et al., 2021) do not analyze this relationship, as well the theoretical model proposed by Oliveira et al. (2019) does not propose this relationship.

The correlation results also show a negative correlation between total unique session views and the clear goals dimension ( $\tau = -.504$ ). At the same time, was also identified a positive correlation between total unique session views and students' concentration ( $\tau = -.504$ ). This result can occur because, on the one hand, if a student does not identify the objectives of the system, they tend to leave the system and, consequently, decrease the number of attempts to view a particular page or mission in the system. At the same time, if the student manages to have a high concentration when using the system, they also tend to do more activities and consequently view the same page or section of the system more often. Although we hypothesize the proposed justification, recent related studies *e.g.* (Lee et al., 2014; Wang & Hsu, 2014; Oliveira et al., 2021) have not analyzed this relationship, which indicates the need for new studies that re-investigate this relationship.

The result obtained in our study corroborates the results of other recent studies conducted using other systems or in other domains (Lee et al., 2014; Oliveira et al., 2020; Wang et al., 2021). We advance the literature demonstrating that it is possible step towards to predict the overall students' flow experience (see Table 4 and Fig. 4) based on the speed of students' action in the system ( $\beta = -.634$ ). Our results demonstrate that system usage time negatively affects the overall flow experience of students, which means that those students who quickly abandoned the use of the system were not able to achieve a high flow experience. This result, in addition to demonstrating that it is possible to predict the overall students' flow experience based on the speed of students' action, also brings insights related to the need to propose mechanisms to make students who left the system back to using the system.

Predicting each of the flow experience dimensions (see Table 5 and Fig. 4), our results indicate that it is possible to use speed of students' action to predict challenge-skill balance ( $\beta = -.815$ ). Similar to the correlation result, the analysis results demonstrate that, as proposed in other studies (Lee et al., 2014; Oliveira, 2019; Oliveira et al., 2020), if a student does not have the system's activity level balanced with their skill level, they tend to leave the system more quickly.

Our results also demonstrate that the frequency of students' actions negatively affects clear goals and loss of self-consciousness. This result may have a direct connection with the fact that if a student cannot clearly understand the goals of a task, they will not be able to achieve a loss of self-consciousness experience (Csikszentmihalyi & Csikszentmihalyi, 1975, 1988; Csikszentmihalyi, 1997a). Thus, consequently, we believe that they perform fewer activities or exit the system faster.

Our results yield guidelines related to how to predict students' flow experience based on the behavior data logs produced by these students when using a given educational system. Based on the results presented in this article, it is possible to advance the currently existing literature and take another step towards the automatic identification of the flow experience in educational systems.

#### **Threats to validation and limitations**

The study presented in this article has some kinds of limitations, which we seek to mitigate throughout the study. The experience measured in the study (*i.e.*, flow experience) is a complex parameter to be measured. To mitigate this limitation, we use only previously validated

methods (*i.e.*, the short FSS validated by Hamari and Koivisto (2014) for the gamification domain and theoretical model proposed by Oliveira et al. (2019) to collect data logs in educational systems). At the same time, to ensure the quality of responses and to avoid external threats (*e.g.*, lack of attention from students), we insert an “attention checking question” within the scale and used other methods (*e.g.*, remove responses from students who used the system for less than five minutes) to avoid data set inconsistencies. Another limitation is related to our small sample size (*i.e.*, 23 students). To mitigate this limitation, we used a robust statistical method capable of accurately analyzing data from small samples (*i.e.*, PLS-PM) (Hair et al., 2016). However, we highlight the importance of replicating the experiment with larger samples to provide a greater results generalization, and we are sure that this paper would serve as an excellent basis for such future research. Finally,  $R^2$  values for some predictions were considered low, which may have been affected by the sample size and limited predictive power. The  $p$  values also are affected by the sample size. This limitation also suggests the replication of the study with larger samples.

### Research agenda

Based on the results obtained in our study, it is possible to advance the literature through insights related to the prediction of students’ flow experience based on their behavior data logs when using a gamified educational system. At the same time, our results allow us to propose a research agenda that can be followed in the coming years. Initially, our study was conducted with a relatively small sample (*i.e.*, 23 undergraduate students), which does not allow us to generalize the results to other contexts and systems. Therefore, we recommend that future research replicate our study with a larger and more heterogeneous sample (*i.e.*, with students from different educational levels).

At the same time, our study was conducted based on a single session using the system. If, on the one hand, this study design allowed us to understand student behavior when using the system, on the other hand, it opened space for the need to understand whether student behavior remains a standard when the system is used more than once by the same group of students. Thus, we recommend that future research replicate our study, however allowing students to use the system more than once over different days, performing multiple data collections over the days of use.

Our study was conducted using a gamified educational system. However, we do not collect data logs related to the system’s gamification elements (*e.g.*, points, badges, and ranking position). Although these data are part of a specific context (*i.e.*, gamification), these data can also corroborate new insights for this area of research. Therefore, we recommend that future research explore new data logs in addition to what we explored in this study, such as data logs related to student interaction with gamification elements.

In our study, we initially performed a correlational analysis and then, used advanced statistical techniques (*i.e.*, PLS-PM) to analyze our data. This choice is justified because it is an appropriate technique for this type of analysis, even with small populations. However, the use of other techniques combined with a larger sample can help to deepen the results. Therefore, we suggest that future research can use other types of data analysis such as data mining and machine learning.

Finally, our study presents insights related to how to predict student flow experience based on their behavior data logs, but we do not provide practical instruments that can, for

example, be plugged into educational systems to predict students' flow experience. Therefore, we recommend that future studies can propose practical approaches, such as developing algorithms that, based on student data logs, provide an automatic analysis identifying which students are or are not in a flow experience.

### Concluding remarks

Predicting student flow experience in educational systems is a contemporary challenge. In this article, we addressed this challenge by predicting students' flow experience in a gamified educational system through their behavior (data logs) during the system usage. Our results show that it is possible to use students' data logs to predict different flow experience dimensions (and the overall flow experience), but the predictive power is still considered low for some cases, which can be better evaluated by replicating the study with a larger sample. As a future study, we aim to replicate the study with larger sample size and propose an algorithm to automatically identify the students' flow experience in educational systems.

### Appendix

See Table 6.

**Table 6** Flow state scale (proposed by Jackson and Eklund (2002) and validated for the gamification domain by Hamari and Koivisto (2014))

Questions	1	2	3	4	5
I felt I was competent enough to meet the demands of the situation					
I did things spontaneously and automatically without having to think					
I had a strong sense of what I wanted to do					
I had a good idea about how well I was doing while I was involved in the task/activity					
I was completely focused on the task at hand					
I had a feeling of total control over what I was doing					
I was not worried about what others may have been thinking of me					
The way time passed seemed to be different from normal					
I found the experience extremely rewarding					
If you are filling out the form carefully, answer 4*					

\*Attention-check question (presented to participants in random order)

### Abbreviations

EEG: Electroencephalogram; FSS: Flow state scale; RQ: Research question; PLS-PM: Partial least squares path modeling; CRV: Construct reliability and validity; CR: Composite reliability; AVE: Average variance extracted.

### Supplementary Information

The online version contains supplementary material available at <https://doi.org/10.1186/s40561-021-00175-6>.

**Additional file 1.** Study dataset.



**Acknowledgements**

The authors would like to thank the funding provided by the São Paulo Research Foundation - FAPESP (Project: 2018/07688-1).

**Authors' contributions**

WO: Conceptualization, Methodology, Formal analysis, Validation, Writing - review and editing. KT: Writing - review and editing. JH: Supervision, Methodology, Validation, Writing - review and editing. OP: Conceptualization, Formal analysis, Validation, Writing - review and editing. SI Supervision. All authors read and approved the final manuscript.

**Funding**

São Paulo Research Foundation (FAPESP).

**Availability of data and material (data transparency)**

Original dataset available as Additional file 1.

**Code availability**

Not applicable.

**Declarations****Ethics approval and consent to participate**

Not applicable.

**Competing interests**

This manuscript has not been submitted to, nor is under review at, another journal or other publishing venue. The authors have no affiliation with any organization with a direct or indirect financial interest in the subject matter discussed in the manuscript.

**Author details**

<sup>1</sup>Institute of Mathematics and Computer Science, University of São Paulo, São Carlos, SP, Brazil. <sup>2</sup>Gamification Group, Faculty of Information Technology and Communication Sciences, Tampere University, Tampere, Finland. <sup>3</sup>Faculty of Information Technology, Brno University of Technology, Brno, Czech Republic.

Received: 13 September 2021 Accepted: 21 October 2021

Published online: 11 November 2021

**References**

- Cesari, V., Galgani, B., Gemignani, A., & Menicucci, D. (2021). Enhancing qualities of consciousness during online learning via multisensory interactions. *Behavioral Sciences*. <https://doi.org/10.3390/bs11050057>
- Chaku, N., Kelly, D. P., & Beltz, A. M. (2021). Individualized learning potential in stressful times: How to leverage intensive longitudinal data to inform online learning. *Computers in Human Behavior*, 121, 106772. <https://doi.org/10.1016/j.chb.2021.106772> (Accessed 2021 Aug 03).
- Chan, K., Wan, K., & King, V. (2021). Performance over enjoyment? Effect of game-based learning on learning outcome and flow experience. *Frontiers in Education*, 6, 185. <https://doi.org/10.3389/educ.2021.660376>.
- Csikszentmihalyi, M. (1990). Flow: The psychology of optimal experience. *Journal of Leisure Research*, 24(1) (Accessed 2021 Aug 08 04).
- Csikszentmihalyi, M. (1997a). Finding flow: The psychology of engagement with everyday life. Basic Books.
- Csikszentmihalyi, M. (1997b). Flow and education. *NAMTA Journal*, 22(2), 2–35.
- Csikszentmihalyi, M. (2014). Toward a psychology of optimal experience. In *Flow and the Foundations of Positive Psychology: The Collected Works of Mihaly Csikszentmihalyi* (pp. 209–226). Springer.
- Csikszentmihalyi, M., & Csikszentmihalyi, I. (1975). *Beyond boredom and anxiety*. Jossey-Bass San Francisco.
- Csikszentmihalyi, M., & Csikszentmihalyi, I.S. (1988). Optimal experience: Psychological studies of flow in consciousness. Cambridge University Press. <https://doi.org/10.1017/CBO9780511621956>
- Dhar, V. (2013). Data science and prediction. *Communications of the ACM*, 56(12), 64–73.
- Eberle, J., & Hobrecht, J. (2021). The lonely struggle with autonomy: A case study of first-year university students' experiences during emergency online teaching. *Computers in Human Behavior*, 121, <https://doi.org/10.1016/j.chb.2021.106804>
- Erhel, S., & Jamet, E. (2019). Improving instructions in educational computer games: Exploring the relations between goal specificity, flow experience and learning outcomes. *Computers in Human Behavior*, 91, 106–114.
- Esteban-Millat, I., Martínez-López, F. J., Huertas-García, R., Meseguer, A., & Rodríguez-Ardura, I. (2014). Modelling students' flow experiences in an online learning environment. *Computers & Education*, 71, 111–123. <https://doi.org/10.1016/j.compedu.2013.09.012> (Accessed 2021 Aug 04).
- Fornell, C., & Larcker, D. F. (1981). Evaluating structural equation models with unobservable variables and measurement error. *Journal of Marketing Research*, 18(1), 39–50.
- Groening, C., & Binnewies, C. (2019). "Achievement unlocked!"—The impact of digital achievements as a gamification element on motivation and performance. *Computers in human behavior* 97, 151–166. <https://doi.org/10.1016/j.chb.2019.02.026>. Accessed 2021 July 30
- Hair Jr, J.F., Hult, G. T. M., Ringle, C., & Sarstedt, M. (2016). *A primer on partial least squares structural equation modeling (PLS-SEM)* (pp. 1–307). Sage publications.

- Hallifax, S., Serna, A., Marty, J.-C., Lavoué, G., & Lavoué, E. (2019). Factors to consider for tailored gamification. In *Proceedings of the annual symposium on computer–human interaction in play* (pp. 559–572).
- Hamari, J. (2019). Gamification. *Gamification*, pp. 1–3. The Blackwell Encyclopedia of Sociology. <https://doi.org/10.1002/9781405165518.wbeos1321>.
- Hamari, J., & Koivisto, J. (2014). Measuring flow in gamification: Dispositional flow scale-2. *Computers in Human Behavior*, 40, 133–143.
- Hamari, J., Shernoff, D. J., Rowe, E., Coller, B., Asbell-Clarke, J., & Edwards, T. (2016). Challenging games help students learn: An empirical study on engagement, flow and immersion in game-based learning. *Computers in Human Behavior*, 54, 170–179. <https://doi.org/10.1016/j.chb.2015.07.045> (Accessed 2021 Aug 04).
- Henseler, J., Ringle, C. M., & Sinkovics, R. R. (2009). The use of partial least squares path modeling in international marketing. In Sinkovics, R. R., & Ghauri, P. N. (Eds.) *New challenges to international marketing* (Vol. 20, pp. 277–319). Emerald Group Publishing Limited. [https://doi.org/10.1108/S1474-7979\(2009\)0000020014](https://doi.org/10.1108/S1474-7979(2009)0000020014)
- Jackson, S., Eklund, B., & Martin, A. (2011). The flow manual the manual for the flow scales manual. sampler set. *Mind*, 1, 1–85.
- Jackson, S. A., & Eklund, R. C. (2002). Assessing flow in physical activity: The flow state scale-2 and dispositional flow scale-2. *Journal of Sport and Exercise Psychology*, 24(2), 133–150.
- Jackson, S. A., & Marsh, H. W. (1996). Development and validation of a scale to measure optimal experience: The flow state scale. *Journal of Sport and Exercise Psychology*, 18(1), 17–35.
- Kalogiannakis, M., Papadakis, S., & Zourmpakis, A.-I. (2021). Gamification in science education. A systematic review of the literature. *Education Sciences*, 11(1), 22. <https://doi.org/10.3390/educsci11010022> (Accessed 2021 July 28).
- Kendall, M. G. (1938). A new measure of rank correlation. *Biometrika*, 30(1/2), 81–93.
- Klein, B. D., Rossin, D., Guo, Y. M., & Ro, Y. K. (2010). An examination of the effects of flow on learning in a graduate-level introductory operations management course. *Journal of Education for Business*, 85(5), 292–298. <https://doi.org/10.1080/08832320903449600> (Accessed 2021 Aug 04).
- Klock, A. C. T., Gasparini, I., Pimenta, M. S., & Hamari, J. (2020). Tailored gamification: A review of literature. *International Journal of Human-Computer Studies*, 144, 102495. <https://doi.org/10.1016/j.ijhcs.2020.102495> (Accessed 2021 July 28).
- Kocadere, S. A., & Çağlar, Ş. (2015). The design and implementation of a gamified assessment. *Journal of e-Learning and Knowledge Society*, 11(3) <https://doi.org/10.20368/1971-8829/1070> (Accessed 2021 Aug 17).
- Koivisto, J., & Hamari, J. (2019). The rise of motivational information systems: A review of gamification research. *International Journal of Information Management*, 45, 191–210. <https://doi.org/10.1016/j.ijinfomgt.2018.10.013> (Accessed 2021 July 28).
- Lee, P.-M., Jheng, S.-Y., & Hsiao, T.-C. (2014). Towards automatically detecting whether student is in flow. In *International conference on intelligent tutoring systems* (pp. 11–18). Springer.
- Likert, R. (1932). A technique for the measurement of attitudes. *Archives of Psychology*, 140, 5–55.
- Lopez, C. E., & Tucker, C. S. (2019). The effects of player type on performance: A gamification case study. *Computers in Human Behavior*, 91, 333–345. <https://doi.org/10.1016/j.chb.2018.10.005> (Accessed 2021 July 30).
- Oliveira, W. (2019). Towards automatic flow experience identification in educational systems: A human–computer interaction approach. In *Extended abstracts of the annual symposium on computer–human interaction in play companion extended abstracts* (pp. 41–46).
- Oliveira, W., Bittencourt, I. I., Isotani, S., Dermeval, D., Marques, L. B., & Silveira, I. F. (2018). Flow theory to promote learning in educational systems: Is it really relevant? *Brazilian Journal of Computers in Education*, 26(02), 29.
- Oliveira, W., Pastushenko, O., Hamari, J., Isotani, S., & Hruška, T. (2021). Modeling students' flow experience through data logs in gamified educational systems. In *2021 IEEE 21st international conference on advanced learning technologies (ICALT)* (pp. 1–5). IEEE
- Oliveira, W., Pastushenko, O., Rodrigues, L., Toda, A. M., Palomino, P.T., Hamari, J., & Isotani, S. (2021). Does gamification affect flow experience? a systematic literature review. In *GamiFIN conference 2021: Proceedings of the 5th international GamiFIN conference* (pp. 1–10).
- Oliveira, W., Rodrigues, L., Toda, A., Palomino, P., Shi, L., & Isotani, S. (2020). Towards automatic flow experience identification in educational systems: A qualitative study. In *Brazilian symposium on computers in education* (Vol. 31).
- Oliveira, W., Toda, A., Palomino, P., Rodrigues, L., Isotani, S., & Shi, L. (2019). Towards automatic flow experience identification in educational systems: A theory-driven approach. In *Extended abstracts of the annual symposium on computer-human interaction in play companion extended abstracts* (pp. 581–588). ACM
- Oliveira, W., Toda, A., Toledo, P., Shi, L., Vassileva, J., Bittencourt, I. I., & Isotani, S. (2020). Does tailoring gamified educational systems matter? the impact on students' flow experience. In *Proceedings of the 53rd Hawaii international conference on system sciences* (pp. 1226–1235).
- Orji, R., Tondello, G. F., & Nacke, L. E. (2018). Personalizing persuasive strategies in gameful systems to gamification user types. In *Proceedings of the 2018 CHI conference on human factors in computing systems* (pp. 1–14).
- Özhan, Ş. Ç., & Kocadere, S. A. (2020). The effects of flow, emotional engagement, and motivation on success in a gamified online learning environment. *Journal of Educational Computing Research*, 57(8), 2006–2031.
- Panigrahi, R., Srivastava, P. R., & Sharma, D. (2018). Online learning: Adoption, continuance, and learning outcome—A review of literature. *International Journal of Information Management*, 43, 1–14. <https://doi.org/10.1016/j.ijinfomgt.2018.05.005> (Accessed 2021 Aug 03).
- Pastushenko, O., Hruška, T., & Zendulka, J. (2018). Increasing students' motivation by using virtual learning environments based on gamification mechanics: Implementation and evaluation of gamified assignments for students. In *Proceedings of the sixth international conference on technological ecosystems for enhancing multiculturalism* (pp. 755–760).
- Pastushenko, O., Oliveira, W., Isotani, S., & Hruška, T. (2020). A methodology for multimodal learning analytics and flow experience identification within gamified assignments. In *Extended abstracts of the 2020 CHI conference on human factors in computing systems* (pp. 1–9).

- Perttula, A., Kiili, K., Lindstedt, A., & Tuomi, P. (2017). Flow experience in game based learning—A systematic literature review. *International Journal of Serious Games*, 4(1), 57–72.
- Sailer, M., & Homner, L. (2020). The gamification of learning: A meta-analysis. *Educational Psychology Review*, 32(1), 77–112. <https://doi.org/10.1007/s10648-019-09498-w> (Accessed 2021-07-30).
- Santos, A.C.G., Oliveira, W., Hamari, J., & Isotani, S. (2021). Do people's user types change over time? An exploratory study. In *Proceedings of the 5th international GamiFIN conference, GamiFIN 2021* (pp. 1–10). CEUR-WS
- Semerci, Y. C., & Goularas, D. (2020). Evaluation of students' flow state in an e-learning environment through activity and performance using deep learning techniques. *Journal of Educational Computing Research*, 0735633120979836.
- Shapiro, S. S., & Wilk, M. B. (1965). An analysis of variance test for normality (complete samples). *Biometrika*, 52(3/4), 591–611.
- Sillaots, M. (2014). Achieving flow through gamification: A study on re-designing research methods courses. In *8th European conference on games based learning* (Vol. 2). Berlin, Germany.
- Tenório, T., Bittencourt, I. I., Isotani, S., Pedro, A., & Ospina, P. (2016). A gamified peer assessment model for on-line learning environments in a competitive context. *Computers in Human Behavior*, 64, 247–263. <https://doi.org/10.1016/j.chb.2016.06.049> (Accessed 2021 July 30).
- Trevino, L. K., & Webster, J. (1992). Flow in computer-mediated communication: Electronic mail and voice mail evaluation and impacts. *Communication Research*, 19(5), 539–573. <https://doi.org/10.1177/009365092019005001> (Accessed 2021 Aug 04).
- Wang, C.-C., & Hsu, M.-C. (2014). An exploratory study using inexpensive electroencephalography (EEG) to understand flow experience in computer-based instruction. *Information & Management*, 51(7), 912–923. <https://doi.org/10.1016/j.im.2014.05.010> Accessed 2021 Aug 17.
- Wang, Y.-T., Lin, K.-Y., & Huang, T. (2021). An analysis of learners' intentions toward virtual reality online learning systems: A case study in taiwan. In *Proceedings of the 54th Hawaii international conference on system sciences* (p. 1519).
- Wohlin, C., Runeson, P., Hst, M., Ohlsson, M. C., Regnell, B., & Wesslin, A. (2012). Experimentation in software engineering (pp. 1–259). Springer.
- Wu, S.-F., Lu, Y.-L., & Lien, C.-J. (2021). Detecting Students' Flow States and Their Construct Through Electroencephalogram: Reflective Flow Experiences, Balance of Challenge and Skill, and Sense of Control. *Journal of Educational Computing Research*, 58(8), 1515–1540. <https://doi.org/10.1177/0735633120944084>. Accessed 2021 Aug 17
- Yen, W.-C., & Lin, H.-H. (2020). Investigating the effect of flow experience on learning performance and entrepreneurial self-efficacy in a business simulation systems context. *Interactive Learning Environments*, 1–16
- Zainuddin, Z., Chu, S. K. W., Shujahat, M., & Perera, C. J. (2020). The impact of gamification on learning and instruction: A systematic review of empirical evidence. *Educational Research Review*, 30. <https://doi.org/10.1016/j.edurev.2020.100326>
- Zhao, J., & Li, Y. (2020). Experimental study on gamification teaching of mathematics classroom practice based on flow experience (pp. 36–40). <https://doi.org/10.1109/CSEI50228.2020.9142485>.
- Zhao, Y., Srite, M., Kim, S., & Lee, J. (2021). Effect of team cohesion on flow: An empirical study of team-based gamification for enterprise resource planning systems in online classes. *Decision Sciences Journal of Innovative Education*, 19(3), 173–184. <https://doi.org/10.1111/dsji.12240>.

## Publisher's Note

Springer Nature remains neutral with regard to jurisdictional claims in published maps and institutional affiliations.

Submit your manuscript to a SpringerOpen<sup>®</sup> journal and benefit from:

- Convenient online submission
- Rigorous peer review
- Open access: articles freely available online
- High visibility within the field
- Retaining the copyright to your article

---

Submit your next manuscript at ► [springeropen.com](https://www.springeropen.com)

---